

# ELCAD / AUCOPLAN 2021

## Installation Instructions

October 2020

**AUCOTEC AG**

Hannoversche Straße 105

D-30916 Isernhagen

Phone: +49 (0)511 61 03-0

Fax: +49 (0)511 61 40 74

[www.aucotec.com](http://www.aucotec.com)

**Copyright:** All rights, especially the right of reproduction and distribution as well as translation, are reserved. No part of this book may be reproduced, stored in retrieval system, or transmitted in any form or by any means, electronic, mechanical, photocopying, microfilming, recording, or otherwise, without prior permission from **AUCOTEC AG**.

**Exclusion of liability:** Texts and software have been prepared with the greatest of care. The publishers as well as the authors cannot assume any legal or other liability of any nature for potential faulty statements and their consequences, which shall apply also for the software potentially included.

**Trademarks:** AUCOPLAN® and ELCAD® are registered trademarks of AUCOTEC AG, Germany. Windows® is a registered trade mark of Microsoft Corporation, USA.

## Content

<b>1</b>	<b>Data packages and installation languages .....</b>	<b>1</b>
<b>2</b>	<b>Preparation .....</b>	<b>2</b>
<b>3</b>	<b>The standard installation .....</b>	<b>3</b>
3.1	The standard installation of ELCAD/AUCOPLAN 2021 via Setup.exe .....	3
3.2	The standard installation of ELCAD/AUCOPLAN 2021 via ELCAD/AUCOPLAN 2021.msi .....	3
<b>4</b>	<b>User-specific installation via Setup.exe .....</b>	<b>4</b>
4.1	Parameters for language-related data packages .....	4
4.2	Silent installation using a differing installation path.....	5
4.3	Silent installation using a differing path for the language-related data packages .....	5
<b>5</b>	<b>User-specific installation via MSI .....</b>	<b>6</b>
5.1	Parameters for language-related data packages .....	6
5.2	Silent installation using a differing installation path.....	6
5.3	Silent installation using a differing path for the language-related data packages .....	7
5.4	Parameters to suppress the reboot.....	7
<b>6</b>	<b>Installation of the dongle driver.....</b>	<b>8</b>
6.1	Selection during the setup .....	8
6.2	Silent installation parameters.....	8
6.3	Subsequent installation .....	8
<b>7</b>	<b>Information on handling environment data on network drives ....</b>	<b>10</b>

## 1 Data packages and installation languages

On installing **ELCAD/AUCOPLAN 2021**, AUOTEC enables you to choose for yourself which data packages are to be installed. The installation language you select also defines the language of the user environment and the primary data package to be installed. This data package can no longer be deselected during the installation. However, you can select additional data packages.

**ELCAD/AUCOPLAN 2021** offers the following installation languages. The number represents the respective Microsoft language ID:

- 1029 Czech
- 1031 German
- 1033 English USA
- 1034 Spanish
- 1036 French
- 1040 Italian
- 1043 Dutch
- 1045 Polish
- 1053 Swedish
- 2057 English UK

Further languages are currently not available.

## 2 Preparation

Installing **ELCAD/AUCOPLAN 2021** requires administrative rights on your local computer. If you are not sure whether you have these rights, contact your system administrator.



To ensure that you have the necessary rights for the installation, right-click Setup.exe and select the function **Run as Administrator** on the shortcut menu.

As a prerequisite, the operating system Windows 8.0 or Windows Server 2012 must at least be installed. Older operating systems or earlier Service Packs are not supported.

To avoid any conflicts during the installation, close all programs and pause your virus-protection software.

ELCAD/AUCOPLAN installs the files in different system folders in accordance with the Microsoft specifications. The installation of **ELCAD/AUCOPLAN 2021** uses the following folders:

### **Programs:**

%PROGRAMFILES%\AUCOTEC\ELCAD 7160

### **User environment (aucotec.ini etc.):**

%LocalAppData%\Local\AUCOTEC\ELCAD 2021\<Language ID>

### **Data (Sample projects, symbols, translate et cetera):**

%Public%\AUCOTEC\ELCAD 2021\<Language-ID>

## 3 The standard installation

### 3.1 The standard installation of ELCAD/AUCOPLAN 2021 via Setup.exe

Open the folder containing the downloaded installation files. Right-click Setup.exe, then select **Run as Administrator** on the shortcut menu. Follow the installation steps. During the installation via Setup.exe, all system-relevant components are installed.

Moreover, you can select the data packages of additional languages during the installation.

### 3.2 The standard installation of ELCAD/AUCOPLAN 2021 via ELCAD/AUCOPLAN 2021.msi

To carry out the standard installation via ELCAD/AUCOPLAN 2021.msi, you have to install the following components from the installation directory beforehand.

- Microsoft Visual C++ 2015-2019 Redistributables x86 (ISSetupPrerequisites{71C1D895-5C2C-4601-9930-FDF4B58ADA57})



Installing the redistributable may cause a restart of the operating system. We therefore recommend to end all other programs prior to the installation.

Once these components are installed, right-click file **ELCAD AUCOPLAN 2021.msi**, then select **Run as Administrator** on the shortcut menu.

During the installation, you can select the data packages of additional languages. You must select at least one data package.

## 4 User-specific installation via Setup.exe

By entering the parameter `/?`, you get an overview on all available parameters of `setup.exe`.

`<Path>Setup.exe /?`

If you start the program `setup.exe`, you can also pass on parameters to the MSI package. This is done via `/V/<Parameter>` or `/V"/<Parameter> /<Parameter>`.

### 4.1 Parameters for language-related data packages

To install further language-related data packages, you can instruct the setup to install further data packages of the MSI package using the parameter `/V<Properties>` or `/V"<Properties> <Properties>`.

The following properties are available:

PACKAGE_1029	Czech data package
PACKAGE_1031	German data package
PACKAGE_1033	American data package
PACKAGE_1034	Spanish data package
PACKAGE_1036	French data package
PACKAGE_1040	Italian data package
PACKAGE_1043	Dutch data package
PACKAGE_1045	Polish data package
PACKAGE_1053	Swedish data package
PACKAGE_2057	British data package

For every parameter that you wish to pass to the MSI package, add a preceding `"/V"`. Every selected data package also creates a start icon with the user environment of the additional language.

#### Example:

`<Path>\setup.exe /S /V"PACKAGE_2057=1 PACKAGE_1033=1 /qn"`



You must always enter a property for a language-related data package. This also applies to the adjustments of the paths of the installation directory and the data packages as described below.

## 4.2 Silent installation using a differing installation path

To run an unattended installation and pass on the parameters for a differing installation path, the command line is as follows:

```
<Path>\setup.exe /S /V"/qn INSTALLDIR=\"<Path>\ELCAD 7160\" PACKAGE_2057=1"
```

or an individual "/V" for every parameter or property

```
<Path>\setup.exe /S /V/qn /V"INSTALLDIR=\"<Path>\ELCAD 7160\""/VPACKAGE_2057=1
```

The quotation marks after /V and at the end limit the parameters to be passed and are therefore mandatory.

## 4.3 Silent installation using a differing path for the language-related data packages

To run an unattended installation and pass on the parameters for a differing path for the language-related data packages, the command line is as follows:

```
<Path>\setup.exe /S /V"/qn ELCAD_DATAPACKAGEDIR=\"<Path>\AUCOTEC\ELCAD 2021\" PACKAGE_2057=1"
```

The quotation marks after /V and at the end limit the parameters to be passed and are therefore mandatory. The specified target folders have to exist.



## 5 User-specific installation via MSI

**ELCAD/AUCOPLAN 2021** also provides you with user-specific installation options for an installation via the MSI package. The Windows Installer installs MSI packages by using the executable **msiexec.exe**. This executable can be run with various parameters.

To install a specific package, use the following command line:

```
msiexec.exe /i <MSI package>
```

To run an unattended MSI installation, use parameters to suppress any user interactions with the MSI package. You can suppress any user interactions in a Windows Installer package using the parameter **/q**.

The parameter **/qn** suppresses all dialogs and the progress bar.

The parameter **/qb** suppresses all dialogs, but displays the progress.

The **ELCAD/AUCOPLAN 2021** setup MSI supports both options.

### 5.1 Parameters for language-related data packages

You can also install additional language-related data packages during an installation via the MSI package. The properties are added to the installation command as follows.

```
Package_1036=1 Package_1043=1 etc.
```

#### Example:

```
msiexec.exe /i "<Path>\ELCAD AUCOPLAN 2021.msi" Package_1036=1 Package_1043=1 /qn
```



You must always enter a property for a language-related data package. This also applies to the adjustments of the paths of the installation directory and the data packages as described below.

### 5.2 Silent installation using a differing installation path

To run an unattended installation and pass on the parameters for a differing installation path, the command line is as follows:

```
msiexec.exe /i "<Path>\ELCAD AUCOPLAN 2021.msi" /qn INSTALLDIR="<Path>\ELCAD 7160"
```

```
Package_1036=1
```

The quotation marks limit the parameters to be passed on and are therefore mandatory. The specified target folders have to exist.

### 5.3 Silent installation using a differing path for the language-related data packages

To run an unattended installation and pass on the parameters for a differing path for the language-related data packages, the command line is as follows:

```
msiexec.exe /i "<Path>\ELCAD AUCOPLAN 2021.msi" /qn ELCAD_DATAPACKAGE-  
DIR="<Path>\AUCOTEC\ELCAD 2021" Package_2057=1
```

The quotation marks limit the parameters to be passed on and are therefore mandatory. The specified target folders have to exist.

### 5.4 Parameters to suppress the reboot

To prevent your computer from rebooting after the installation, use the parameter **REBOOT=Suppress** together with the parameters **/qn** or **/qb**. Put the parameter in quotation marks.

```
msiexec.exe /i "<Path>\ELCAD AUCOPLAN 2021.msi" "/qn REBOOT=Suppress"
```

By entering the parameter **/?**, you get an overview on further available parameters.

```
msiexec.exe /? or "ELCAD AUCOPLAN 2021.msi" /?
```

## 6 Installation of the dongle driver

If you use licensing by a dongle, you should install the current dongle driver that is delivered together with ELCAD. It provides you with the latest state of the software and can therefore resolve stability and security issues. By default, the installation of the dongle driver is deactivated. To install the new dongle driver, activate the option in the ELCAD setup.

### 6.1 Selection during the setup

During the standard installation, you can select option **Installation of the dongle driver** in the **Custom Setup** dialog. The driver is then installed together with the standard installation.



### 6.2 Silent installation parameters

During a silent installation or during an installation via a distributor software, you have to pass parameter `AUC_DONGLE_DRIVER_INSTALL=1` to install the latest driver.

If you are using `setup.exe`, pass the parameter as follows:

```
/VAUC_DONGLE_DRIVER_INSTALL=1
```

For the installation via MSI package "ELCAD AUCOPLAN 2021.msi", pass the parameter as follows:

```
AUC_DONGLE_DRIVER_INSTALL=1
```

### 6.3 Subsequent installation

During the installation, ELCAD saves the installation file `haspdinst.exe` in the `HARDLOCK` folder located in the program folder. Using the command prompt, you can also install the dongle driver at a later stage. To do so, run the command prompt as administrator.

Example of a command line:

```
C:\> Administrator: Eingabeaufforderung
Microsoft Windows [Version 10.0.17763.1457]
(c) 2018 Microsoft Corporation. Alle Rechte vorbehalten.

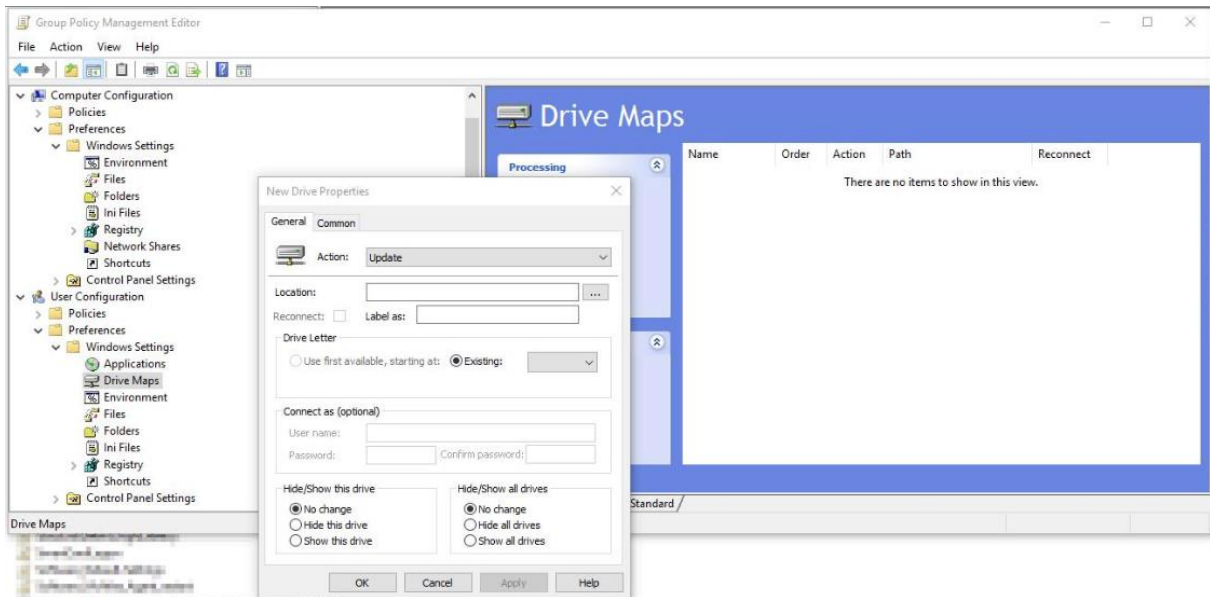
C:\Windows\system32>cd C:\Program Files (x86)\AUCOTEC\ELCAD 7160\HARDLOCK
C:\Program Files (x86)\AUCOTEC\ELCAD 7160\HARDLOCK>haspdinst.exe -i -fi -kp -fss
```

## 7 Information on handling environment data on network drives

Group Policies for Mapped Drives:

If you mount drives for ELCAD in a network by using group policies, you have to use the setting "Update" for the mapped drives.

The setting "Replace" causes issues on using ELCAD.



Below, you will find some details on the settings "Replace" and "Update".

### Actions

This type of preference item provides a choice of four actions: **Create**, **Replace**, **Update**, and **Delete**. The behavior of the preference item varies with the action selected and whether the drive letter already exists.

<b>Create</b>	Create a new mapped drive for users.
<b>Delete</b>	Remove a mapped drive for users.
<b>Replace</b>	Delete and recreate mapped drives for users. The net result of the <b>Replace</b> action is to overwrite all existing settings associated with the mapped drive. If the drive mapping does not exist, then the <b>Replace</b> action creates a new drive mapping.
<b>Update</b>	Modify settings of an existing mapped drive for users. This action differs from <b>Replace</b> in that it only updates settings defined within the preference item. All other settings remain as configured on the mapped drive. If the drive mapping does not exist, then the <b>Update</b> action creates a new drive mapping.

You will find further information on this topic under [https://docs.microsoft.com/en-us/previous-versions/windows/it-pro/windows-server-2012-r2-and-2012/dn789188\(v%3Dws.11\)](https://docs.microsoft.com/en-us/previous-versions/windows/it-pro/windows-server-2012-r2-and-2012/dn789188(v%3Dws.11))